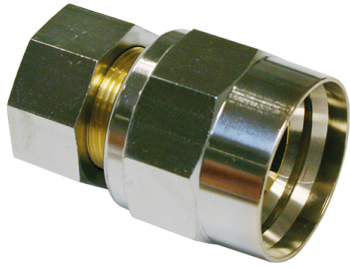


Couplings with threaded ferrules

Couplings with threaded ferrules and BSP female thread



Norm	EN 14424
Norm thread	DIN EN ISO 228-1
Thread description	BSPP thread / G-thread
Material	Chrome plated brass
Working pressure	25 bar
Min. temperature	-20 °C
Max. temperature	+65 °C
Material threaded seal	PU
Colour threaded seal	Red-brown

Art.-no.	For hose Ø inner (mm)	For hose Ø outside (mm)	Female thread	Weight (kg/pce)
5550016019	15	25	3/4"	0,146
5550016025	15	25	1"	0,188
5550019025	19	31	1"	0,190
5550025025	25	37	1"	0,233

