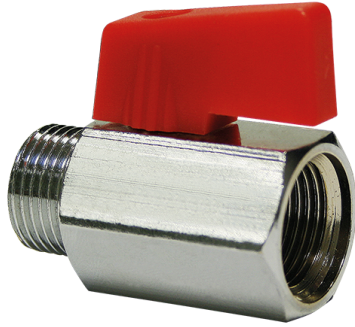


Mini ball valves - type 126

One side female thread and one side male thread



Norm thread	DIN EN ISO 228-1
Thread description	BSPP thread / G-thread
Working pressure	10 bar
Min. temperature	0 °C
Max. temperature	+90 °C
Material seal/gasket	PTFE
Material type body	Chrome plated brass
Ball material	Hard chrome plated hot pressed brass
Material handle	Nylon
Colour handle	Red

Art.-no.	Female thread	Male thread	Bore mm	Built-in length (mm)	Weight (kg/pce)
5291006126	1/4"	1/4"	8	39	0,070
5291010126	3/8"	3/8"	8	40	0,065
5291013126	1/2"	1/2"	10	45	0,098

