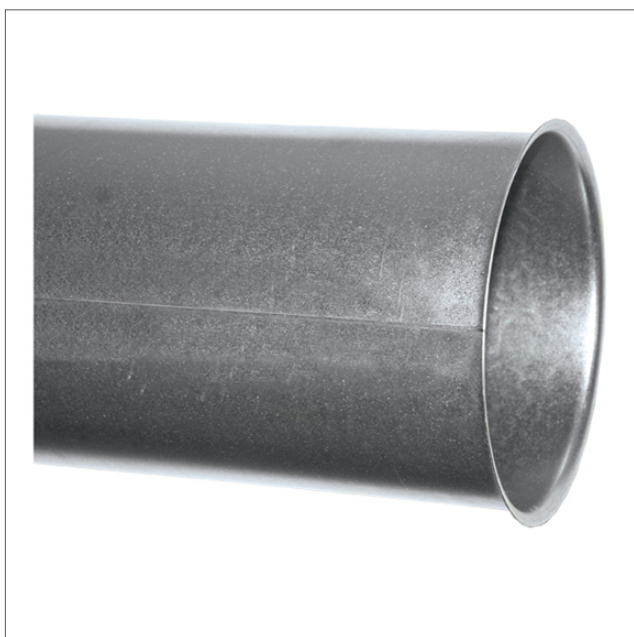




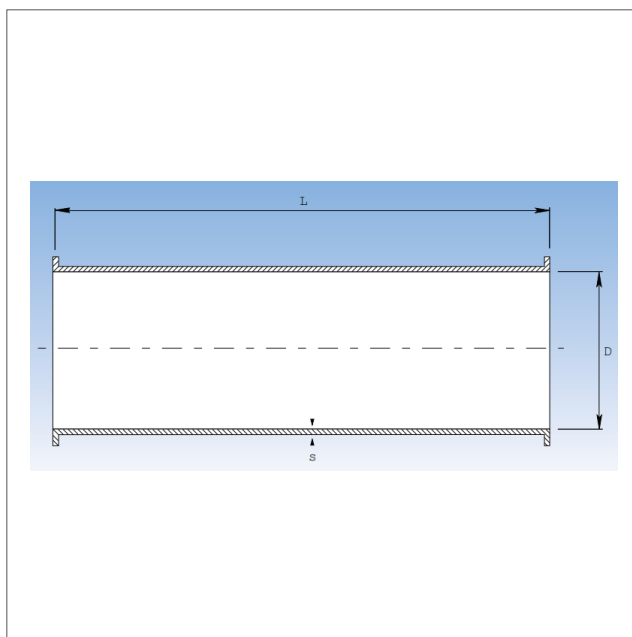
GAPL - Pipe laser welded

Galvanized steel - Pull ring edge

Laser-welded galvanised steel tube with pull ring edge. Used for dust extraction and transport of lighter material such as dust and wood shavings. Wall thickness = 0.7-0.9 mm.



GAPL - Pipe laser welded



Pipe - drawing. See measurement in the table.

Art.no	Ø (mm)	L (mm)	Weight (kg)
GAPL-080-20	80	2000	2,9
GAPL-100-20	100	2000	3,7
GAPL-120-20	120	2000	4,4
GAPL-125-20	125	2000	4,6
GAPL-140-20	140	2000	5,1
GAPL-150-20	150	2000	5,5
GAPL-160-20	160	2000	6,7
GAPL-180-20	180	2000	6,7
GAPL-200-20	200	2000	7,2
GAPL-225-20	225	2000	8,2
GAPL-250-20	250	2000	9
GAPL-300-20	300	2000	11
GAPL-315-20	315	2000	12
GAPL-350-20	350	2000	13
GAPL-400-20	400	2000	18

Art.no	Ø (mm)	L (mm)	Weight (kg)
GAPL-080-10	80	1000	1,6
GAPL-100-10	100	1000	2
GAPL-120-10	120	1000	2,4
GAPL-125-10	125	1000	2,5
GAPL-140-10	140	1000	2,8
GAPL-150-10	150	1000	3
GAPL-160-10	160	1000	3,2
GAPL-180-10	180	1000	3,5
GAPL-200-10	200	1000	4
GAPL-225-10	225	1000	4,5
GAPL-250-10	250	1000	5
GAPL-300-10	300	1000	5,7
GAPL-315-10	315	1000	6
GAPL-350-10	350	1000	6,5
GAPL-400-10	400	1000	9

Art.no	Ø (mm)	L (mm)	Weight (kg)
GAPL-080-05	80	500	0,8
GAPL-100-05	100	500	1
GAPL-120-05	120	500	1,2
GAPL-125-05	125	500	1,25
GAPL-140-05	140	500	1,4
GAPL-150-05	150	500	1,5
GAPL-160-05	160	500	1,6
GAPL-180-05	180	500	1,75
GAPL-200-05	200	500	2
GAPL-225-05	225	500	2,25
GAPL-250-05	250	500	2,5
GAPL-300-05	300	500	2,85
GAPL-315-05	315	500	3
GAPL-350-05	350	500	3,25
GAPL-400-05	400	500	4,5