

Antistatic polyurethane hose, medium-heavy, microbe resistant

Application

- flexible hose/ ducting for abrasive powder, bulk material, granulate and for gases
- printed circuit board drilling machine (PCB)
- offset printing machine: air supply, air supply cabinet
- air supply: UV dryer, IR dryer
- extraction unit, dedusting system, filter system, oil mist extraction
- chemical industry: chemical vapours, vapour return hose at loading arm, paint steam, spray mist extraction
- explosion hazard area
- textile industry, fiber extraction: spinning machine, knitting machine, weaving loom machine
- animal stall, animal shed: barn ventilation
- clean room ventilation, semiconductor production machine
- compressor, side channel blower, vacuum pump, pressure pump, pump
- surface preparation: shot blasting/ sand blasting recovery e.g. at blasting chamber, ship yard, stripping machine, flooring preparation machine, grinding machine

- municipal vehicle: sweeper, sweeping machine
- municipal vehicle: lawn mower, slope mower, leaf blower/ leaf collector
- scrubber, floor cleaning machine
- heating hose: exterior hose as protection hose

Properties

- medium-heavy duty
- highly abrasion resistant
- microbe resistant
- good resistance to oil, gasoline and chemicals
- very good low temperature flexibility
- permanently antistatic wall: according to ISO 8031 electrical and surface resistance $<10^9 \Omega$ (according to TRGS 727 $<2,5 \cdot 10^9 \Omega \cdot m$ and NFPA 652 $10^8-10^9 \Omega$)
- in accordance with ATEX 2014/34/EU (1999/92/EC) and German TRGS 727: pneumatic transport of flammable dusts and bulk materials (Zone 20, 21, 22 inside), aspiration of combustible dusts (Zone 22 inside),
- in accordance with ATEX 2014/34/EU (1999/92/EC) and German TRGS 727: for conveying for flammable liquids (inside zone 0, 1, 2), for conveying for non-flammable liquids, for use in zone 1 and 2 (gases), for use in zone 0 (gases)

- according to DIN 26057 Type 2
- conforms to RoHS guideline
- REACH according to --> Technology / Technical Information / REACH

Temperature Range

- 40°C to 90°C
- short time to 125°C

Design

- AIRDUC® profile hose
- wall: permanently antistatic premium ester-polyurethane (Pre-PUR®)
- spring steel wire firmly embedded in wall
- wall thickness 0,7 mm approx.

Delivery variants

- further diameters and lengths available on request

I.D. (in / mm)	outer Ø (mm)	Pressure DIN 26057 (50% Elongation) (bar)	Vacuum DIN 26057 (axially fixed) (bar)	Bending Radius (mm)	Weight (kg/m)	Minimum Quantity (m)	Order No.
black + blue							
1,25 / 32	39.00	1,930 (4,29)	0,590 (1,00)	27.00	0.27	150	350-0032-0996
1,5 / 38	45.00	1,635 (3,64)	0,495 (1,00)	31.00	0.31	150	350-0038-0996
- / 40	47.00	1,555 (3,46)	0,470 (1,00)	32.00	0.33	150	350-0040-0996
2 / 50-51	57.00	1,250 (2,78)	0,380 (1,00)	38.00	0.40	150	350-0050-0996
2,36 / 60	67.00	1,050 (2,33)	0,315 (0,83)	44.00	0.48	150	350-0060-0996
2,5 / 63-65	70.00	0,970 (2,15)	0,290 (0,71)	47.00	0.52	150	350-0065-0996
- / 70	77.00	0,900 (2,00)	0,185 (0,83)	50.00	0.56	150	350-0070-0996
3 / 75-76	82.00	0,840 (1,87)	0,175 (0,72)	53.00	0.59	100	350-0075-0996
- / 80	87.00	0,790 (1,75)	0,160 (0,64)	56.00	0.64	100	350-0080-0996
- / 85	92.00	0,750 (1,65)	0,155 (0,65)	59.00	0.68	100	350-0085-0996
4 / 100-102	107.00	0,635 (1,41)	0,135 (0,66)	68.00	0.80	100	350-0100-0996
5 / 125-127	132.00	0,510 (1,13)	0,110 (0,42)	83.00	0.98	100	350-0125-0996

Overpressure and underpressure are recommended threshold operating values, products can be subjected to higher loads upon request. The bending radius is measured through the inside of the hose arch. The right to make technical modifications is reserved. All values determined at 20°C and are approx. data. Additional information at www.norres.com/en/technology/



I.D.	outer Ø	Pressure DIN 26057 (50% Elongation)	Vacuum DIN 26057 (axially fixed)	Bending Radius	Weight	Minimum Quantity	Order No.
(in / mm)	(mm)	(bar)	(bar)	(mm)	(kg/m)	(m)	
5,5 / 140	147.00	0,455 (1,01)	0,095 (0,33)	92.00	1.09	80	350-0140-0996
6 / 150-152	157.00	0,425 (0,94)	0,075 (0,36)	98.00	1.40	80	350-0150-0996
6,3 / 160	167.00	0,400 (0,88)	0,070 (0,31)	104.00	1.50	80	350-0160-0996
8 / 200-203	207.00	0,320 (0,71)	0,055 (0,19)	128.00	1.86	60	350-0200-0996

black + green

1,25 / 32	39.00	1,930 (4,29)	0,590 (1,00)	27.00	0.27	150	350-0032-0997
1,5 / 38	45.00	1,635 (3,64)	0,495 (1,00)	31.00	0.31	150	350-0038-0997
- / 40	47.00	1,555 (3,46)	0,470 (1,00)	32.00	0.33	150	350-0040-0997
2 / 50-51	57.00	1,250 (2,78)	0,380 (1,00)	38.00	0.40	150	350-0050-0997
2,36 / 60	67.00	1,050 (2,33)	0,315 (0,83)	44.00	0.48	150	350-0060-0997
2,5 / 63-65	70.00	0,970 (2,15)	0,290 (0,71)	47.00	0.52	150	350-0065-0997
- / 70	77.00	0,900 (2,00)	0,185 (0,83)	50.00	0.56	150	350-0070-0997
3 / 75-76	82.00	0,840 (1,87)	0,175 (0,72)	53.00	0.59	100	350-0075-0997
- / 80	87.00	0,790 (1,75)	0,160 (0,64)	56.00	0.64	100	350-0080-0997
- / 85	92.00	0,750 (1,65)	0,155 (0,65)	59.00	0.68	100	350-0085-0997
4 / 100-102	107.00	0,635 (1,41)	0,135 (0,66)	68.00	0.80	100	350-0100-0997
5 / 125-127	132.00	0,510 (1,13)	0,110 (0,42)	83.00	0.98	100	350-0125-0997
5,5 / 140	147.00	0,455 (1,01)	0,095 (0,33)	92.00	1.09	80	350-0140-0997
6 / 150-152	157.00	0,425 (0,94)	0,075 (0,36)	98.00	1.40	80	350-0150-0997
6,3 / 160	167.00	0,400 (0,88)	0,070 (0,31)	104.00	1.50	80	350-0160-0997
8 / 200-203	207.00	0,320 (0,71)	0,055 (0,19)	128.00	1.86	60	350-0200-0997

black + red

1,25 / 32	39.00	1,930 (4,29)	0,590 (1,00)	27.00	0.27	150	350-0032-0999
1,5 / 38	45.00	1,635 (3,64)	0,495 (1,00)	31.00	0.31	150	350-0038-0999
- / 40	47.00	1,555 (3,46)	0,470 (1,00)	32.00	0.33	150	350-0040-0999
2 / 50-51	57.00	1,250 (2,78)	0,380 (1,00)	38.00	0.40	150	350-0050-0999
2,36 / 60	67.00	1,050 (2,33)	0,315 (0,83)	44.00	0.48	150	350-0060-0999
2,5 / 63-65	70.00	0,970 (2,15)	0,290 (0,71)	47.00	0.52	150	350-0065-0999
- / 70	77.00	0,900 (2,00)	0,185 (0,83)	50.00	0.56	150	350-0070-0999
3 / 75-76	82.00	0,840 (1,87)	0,175 (0,72)	53.00	0.59	100	350-0075-0999
- / 80	87.00	0,790 (1,75)	0,160 (0,64)	56.00	0.64	100	350-0080-0999
- / 85	92.00	0,750 (1,65)	0,155 (0,65)	59.00	0.68	100	350-0085-0999
4 / 100-102	107.00	0,635 (1,41)	0,135 (0,66)	68.00	0.80	100	350-0100-0999
5 / 125-127	132.00	0,510 (1,13)	0,110 (0,42)	83.00	0.98	100	350-0125-0999
5,5 / 140	147.00	0,455 (1,01)	0,095 (0,33)	92.00	1.09	80	350-0140-0999
6 / 150-152	157.00	0,425 (0,94)	0,075 (0,36)	98.00	1.40	80	350-0150-0999
6,3 / 160	167.00	0,400 (0,88)	0,070 (0,31)	104.00	1.50	80	350-0160-0999
8 / 200-203	207.00	0,320 (0,71)	0,055 (0,19)	128.00	1.86	60	350-0200-0999

black + yellow

1,25 / 32	39.00	1,930 (4,29)	0,590 (1,00)	27.00	0.27	150	350-0032-0998
1,5 / 38	45.00	1,635 (3,64)	0,495 (1,00)	31.00	0.31	150	350-0038-0998
- / 40	47.00	1,555 (3,46)	0,470 (1,00)	32.00	0.33	150	350-0040-0998
2 / 50-51	57.00	1,250 (2,78)	0,380 (1,00)	38.00	0.40	150	350-0050-0998
2,36 / 60	67.00	1,050 (2,33)	0,315 (0,83)	44.00	0.48	150	350-0060-0998
2,5 / 63-65	70.00	0,970 (2,15)	0,290 (0,71)	47.00	0.52	150	350-0065-0998
- / 70	77.00	0,900 (2,00)	0,185 (0,83)	50.00	0.56	150	350-0070-0998
3 / 75-76	82.00	0,840 (1,87)	0,175 (0,72)	53.00	0.59	100	350-0075-0998
- / 80	87.00	0,790 (1,75)	0,160 (0,64)	56.00	0.64	100	350-0080-0998
- / 85	92.00	0,750 (1,65)	0,155 (0,65)	59.00	0.68	100	350-0085-0998
4 / 100-102	107.00	0,635 (1,41)	0,135 (0,66)	68.00	0.80	100	350-0100-0998

Overpressure and underpressure are recommended threshold operating values, products can be subjected to higher loads upon request. The bending radius is measured through the inside of the hose arch. The right to make technical modifications is reserved. All values determined at 20°C and are approx. data. Additional information at www.norres.com/en/technology/

I.D. (in / mm)	outer Ø (mm)	Pressure DIN 26057 (50% Elongation) (bar)	Vacuum DIN 26057 (axially fixed) (bar)	Bending Radius (mm)	Weight (kg/m)	Minimum Quantity (m)	Order No.
5 / 125-127	132.00	0,510 (1,13)	0,110 (0,42)	83.00	0.98	100	350-0125-0998
5,5 / 140	147.00	0,455 (1,01)	0,095 (0,33)	92.00	1.09	80	350-0140-0998
6 / 150-152	157.00	0,425 (0,94)	0,075 (0,36)	98.00	1.40	80	350-0150-0998
6,3 / 160	167.00	0,400 (0,88)	0,070 (0,31)	104.00	1.50	80	350-0160-0998
8 / 200-203	207.00	0,320 (0,71)	0,055 (0,19)	128.00	1.86	60	350-0200-0998

Overpressure and underpressure are recommended threshold operating values, products can be subjected to higher loads upon request. The bending radius is measured through the inside of the hose arch. The right to make technical modifications is reserved. All values determined at 20 °C and are approx. data. Additional information at www.norres.com/en/technology/

Accessories



CONNECT DAIRY FITTING 247



CONNECT 240 + 241 AS



CONNECT THREAD FITTING 234



CONNECT ASEPTIC FITTING 249



CLAMP 213



CONNECT 245



CONNECT 243



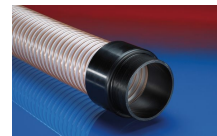
CONNECT TRI-CLAMP FITTING 245



CONNECT 246 AS



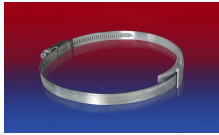
CONNECT 223



CONNECT 242



CLAMP 217



CLAMP 210 BRIDGE CLAMP



CONNECT 270-271



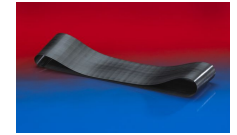
CONNECT MOULD ASSEMBLY 233



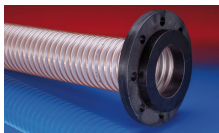
CLAMP 212



CONNECT 240 EC



CONNECT 228



CONNECT 244

Overpressure and underpressure are recommended threshold operating values, products can be subjected to higher loads upon request. The bending radius is measured through the inside of the hose arch. The right to make technical modifications is reserved. All values determined at 20 °C and are approx. data. Additional information at www.norres.com/en/technology/