

Antistatic food hose and pharmaceutical hose, medium-heavy

Application

- flexible hose/ ducting for abrasive powder, bulk material, granulate and for gases
- food industry, pharmaceutical industry: foodstuff, pharmaceutical
- conveying of dry foods e.g. rice, cereals, sugar, milk powder, powders, coffee, tea, grains, flour, frozen foods
- mixer, dryer, packaging machine, bulk-bag (big bag)-charging and discharging, mill
- explosion hazard area
- clean room ventilation, semiconductor production machine
- paper mill, paper and pulp industry: waste water, air extraction
- medical equipment/ medical technology, healthcare sector: cable protection conduit, air supply hose, extraction hose
- municipal vehicle: lawn mower, slope mower, leaf blower/ leaf collector

Properties

- medium-heavy duty
- highly abrasion resistant

- Food grade wall, complies with: EU-Directive 10/2011 and EC 1935/2004, incl. the latest EU-Directive 2015/174, FDA 21 CFR 177.2600
- odourless and tasteless
- microbe and hydrolysis resistant
- good resistance to oil, gasoline and chemicals
- permanently antistatic wall: according to ISO 8031 electrical and surface resistance $<10^9 \Omega$ (according to TRGS 727 $<2,5 \cdot 10^8 \Omega \cdot m$ and NFPA 652 $10^8-10^9 \Omega$)
- very good low temperature flexibility
- in accordance with ATEX 2014/34/EU (1999/92/EC) and German TRGS 727: pneumatic transport of flammable dusts and bulk materials (Zone 20, 21, 22 inside), aspiration of combustible dusts (Zone 22 inside),
- in accordance with ATEX 2014/34/EU (1999/92/EC) and German TRGS 727: for conveying for flammable liquids (inside zone 0, 1, 2), for conveying for non-flammable liquids, for use in zone 1 and 2 (gases), for use in zone 0 (gases)
- according to DIN 26057 Type 2
- manufacturing process acc. GMP EC 2023/2006
- conforms to RoHS guideline
- REACH according to --> Technology / Technical Information / REACH

Temperature Range

Temperature Range

- 40°C to 90°C
- short time to 125°C

Design

- AIRDUC® profile hose
- spring steel wire firmly embedded in wall
- wall: permanently antistatic premium ether-polyurethane (Pre-PUR®)
- wall thickness 0,7 mm approx.

Delivery variants

- further diameters and lengths available on request
- transparent (standard)
- customer-specific branding

I.D. (in / mm)	outer Ø (mm)	Pressure DIN 26057 (50% Elongation) (bar)	Vacuum DIN 26057 (axially fixed) (bar)	Bending Radius (mm)	Weight (kg/m)	Dimensions in Stock (m)	Order No.
neutral imprint: <ID> antistatic + microbe resistant <neutral batch no.> / no cutting							
1,5 / 38	45.00	1,635 (3,64)	0,495 (1,00)	31.00	0.31	10	350-0038-0007
- / 40	47.00	1,555 (3,46)	0,470 (1,00)	32.00	0.33	10	350-0040-0007
2 / 50-51	57.00	1,250 (2,78)	0,380 (1,00)	38.00	0.40	10	350-0050-0007
2,36 / 60	67.00	1,050 (2,33)	0,315 (0,83)	44.00	0.48	10	350-0060-0007
2,5 / 63-65	70.00	0,970 (2,15)	0,290 (0,71)	47.00	0.52	10	350-0065-0007
- / 70	77.00	0,900 (2,00)	0,185 (0,83)	50.00	0.56	10	350-0070-0007
- / 75	82.00	0,840 (1,87)	0,175 (0,72)	53.00	0.59	10	350-0075-0007
- / 80	87.00	0,790 (1,75)	0,160 (0,64)	56.00	0.64	10	350-0080-0007
4 / 100-102	107.00	0,635 (1,41)	0,135 (0,66)	68.00	0.80	10	350-0100-0007
4,72 / 120	127.00	0,530 (1,17)	0,115 (0,46)	80.00	0.95	10	350-0120-0007

Overpressure and underpressure are recommended threshold operating values, products can be subjected to higher loads upon request. The bending radius is measured through the inside of the hose arch. The right to make technical modifications is reserved. All values determined at 20°C and are approx. data. Additional information at

www.norres.com/en/technology/

www.norres.com



I.D.	outer Ø	Pressure DIN 26057 (50% Elongation)	Vacuum DIN 26057 (axially fixed)	Bending Radius	Weight	Dimensions in Stock	Order No.
(in / mm)	(mm)	(bar)	(bar)	(mm)	(kg/m)	(m)	
5 / 125-127	132.00	0,510 (1,13)	0,110 (0,42)	83.00	0.98	10	350-0125-0007
5,5 / 140	147.00	0,455 (1,01)	0,095 (0,33)	92.00	1.09	10	350-0140-0007
6 / 150-152	157.00	0,425 (0,94)	0,075 (0,36)	98.00	1.40	10	350-0150-0007
6,3 / 160	167.00	0,400 (0,88)	0,070 (0,31)	104.00	1.50	10	350-0160-0007
7 / 178-180	187.00	0,355 (0,78)	0,060 (0,24)	116.00	1.67	10	350-0180-0007
8 / 200-203	207.00	0,320 (0,71)	0,055 (0,19)	128.00	1.86	10	350-0200-0007

standard							
1 / 25	32.00	2,445 (5,45)	0,755 (1,00)	23.00	0.19	5 10 15	350-0025-0000
- / 30	37.00	2,055 (4,57)	0,630 (1,00)	26.00	0.25	5 10 15	350-0030-0000
1,25 / 32	39.00	1,930 (4,29)	0,590 (1,00)	27.00	0.27	5 10 15	350-0032-0000
1,36 / 35	42.00	1,770 (3,94)	0,540 (1,00)	29.00	0.29	5 10 15	350-0035-0000
1,5 / 38	45.00	1,635 (3,64)	0,495 (1,00)	31.00	0.31	5 10 15	350-0038-0000
- / 40	47.00	1,555 (3,46)	0,470 (1,00)	32.00	0.33	5 10 15	350-0040-0000
1,75 / 44-45	52.00	1,390 (3,08)	0,420 (1,00)	35.00	0.37	5 10 15	350-0045-0000
2 / 50-51	57.00	1,250 (2,78)	0,380 (1,00)	38.00	0.40	5 10 15 20	350-0050-0000
- / 55	62.00	1,140 (2,53)	0,345 (0,99)	41.00	0.44	5 10 15	350-0055-0000
2,36 / 60	67.00	1,050 (2,33)	0,315 (0,83)	44.00	0.48	5 10 15	350-0060-0000
2,5 / 63-65	70.00	0,970 (2,15)	0,290 (0,71)	47.00	0.52	5 10 15	350-0065-0000
- / 70	77.00	0,900 (2,00)	0,185 (0,83)	50.00	0.56	5 10 15	350-0070-0000
3 / 75-76	82.00	0,840 (1,87)	0,175 (0,72)	53.00	0.59	5 10 15	350-0075-0000
- / 80	87.00	0,790 (1,75)	0,160 (0,64)	56.00	0.64	5 10 15	350-0080-0000
3,5 / 89-90	97.00	0,705 (1,56)	0,145 (0,51)	62.00	0.72	5 10 15	350-0090-0000
4 / 100-102	107.00	0,635 (1,41)	0,135 (0,66)	68.00	0.80	5 10 15	350-0100-0000
- / 110	117.00	0,575 (1,28)	0,125 (0,55)	74.00	0.87	5 10 15	350-0110-0000
4,5 / 114-115	122.00	0,550 (1,22)	0,120 (0,50)	77.00	0.90	5 10 15	350-0115-0000
4,72 / 120	127.00	0,530 (1,17)	0,115 (0,46)	80.00	0.95	5 10 15	350-0120-0000
5 / 125-127	132.00	0,510 (1,13)	0,110 (0,42)	83.00	0.98	5 10 15	350-0125-0000
- / 130	137.00	0,490 (1,08)	0,105 (0,39)	86.00	1.01	5 10 15	350-0130-0000
5,5 / 140	147.00	0,455 (1,01)	0,095 (0,33)	92.00	1.09	5 10 15	350-0140-0000
6 / 150-152	157.00	0,425 (0,94)	0,075 (0,36)	98.00	1.40	5 10 15	350-0150-0000
6,3 / 160	167.00	0,400 (0,88)	0,070 (0,31)	104.00	1.50	5 10 15	350-0160-0000
- / 170	177.00	0,375 (0,83)	0,065 (0,28)	108.00	1.58	5 10 15	350-0170-0000
- / 175	182.00	0,365 (0,81)	0,065 (0,26)	113.00	1.63	5 10 15	350-0175-0000
7 / 178-180	187.00	0,355 (0,78)	0,060 (0,24)	116.00	1.67	5 10 15	350-0180-0000
8 / 200-203	207.00	0,320 (0,71)	0,055 (0,19)	128.00	1.86	5 10 15	350-0200-0000
- / 225	232.00	0,285 (0,63)	0,050 (0,15)	143.00	2.08	5 10	350-0225-0000
- / 250	257.00	0,255 (0,57)	0,045 (0,12)	158.00	2.31	5 10	350-0250-0000
10 / 254	261.00	0,250 (0,56)	0,045 (0,11)	160.00	2.14	5 10 15	350-0254-0000
- / 275	282.00	0,230 (0,51)	0,040 (0,09)	173.00	2.54	5 10	350-0275-0000
11 / 280	287.00	0,230 (0,51)	0,040 (0,09)	176.00	2.59	5 10	350-0280-0000
- / 300	307.00	0,215 (0,47)	0,035 (0,08)	188.00	2.77	5 10	350-0300-0000
12 / 305	312.00	0,210 (0,46)	0,035 (0,07)	191.00	2.81	5 10	350-0305-0000
- / 350	357.00	0,185 (0,40)	0,030 (0,05)	218.00	3.22	5 10	350-0350-0000
14 / 356	363.00	0,180 (0,40)	0,030 (0,06)	222.00	3.34	5 10	350-0356-0000
- / 400	407.00	0,160 (0,35)	0,030 (0,05)	248.00	4.17	5 10	350-0400-0000
- / 450	457.00	0,140 (0,32)	0,025 (0,04)	281.00	4.69	5 10	350-0450-0000
- / 500	507.00	0,130 (0,28)	0,025 (0,03)	313.00	5.20	5 10	350-0500-0000

Overpressure and underpressure are recommended threshold operating values, products can be subjected to higher loads upon request. The bending radius is measured through the inside of the hose arch. The right to make technical modifications is reserved. All values determined at 20 °C and are approx. data. Additional information at www.norres.com/en/technology/

Overpressure and underpressure are recommended threshold operating values, products can be subjected to higher loads upon request. The bending radius is measured through the inside of the hose arch. The right to make technical modifications is reserved. All values determined at 20 °C and are approx. data. Additional information at www.norres.com/en/technology/

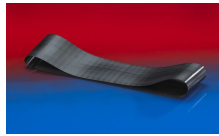
Accessories



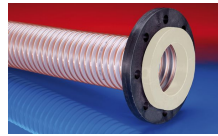
CONNECT 246
FOOD



CONNECT ASEPTIC
FITTING 249



CONNECT 228



CONNECT 244
FOOD



CLAMP 217



CONNECT MOULD
ASSEMBLY 233



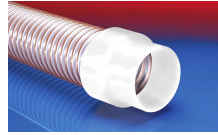
CONNECT TRI-
CLAMP FITTING 245



CLAMP 213



CLAMP 212



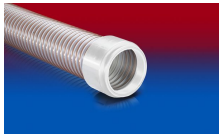
CONNECT 240 + 241
FOOD



CONNECT 270-271



CONNECT 223



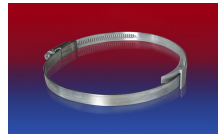
CONNECT 245
FOOD



CONNECT DAIRY
FITTING 247



CONNECT 243
FOOD



CLAMP 210 BRIDGE
CLAMP



CONNECT THREAD
FITTING 234