



Metal hose, transport hose

Application

- hose/ ducting for high throughput of extremely abrasive bulk material, granulate and stone
- explosion hazard area
- raw material conveying hose for powders, granulates, sand, quartz, gravel, shards and chips/ shavings
- high temperature extraction: oven, foundry, furnace, smelting, ceramics industry, glass industry, steel plant, aluminium mill

Properties

- super-heavy duty and extremely reinforced
- abrasion-resistant

- flame-retardant
- in accordance with ATEX 2014/34/EU (1999/92/EC) and German TRGS 727: pneumatic transport of flammable dusts and bulk materials (Zone 20, 21, 22 inside)
- conforms to RoHS guideline
- REACH according to --> Technology / Technical Information / REACH

Temperature Range

- 120°C

Design

- Metal hose

- profiled metal strip, galvanised steel
- hooked profile
- seal: special fibre
- reinforcement of the primary abrasion areas

Delivery variants

- further diameters and lengths available on request
- up to 400°C approx. with glass fibre sealing
- up to 600°C approx. with glass fibre sealing and stainless steel (INOX)

I.D.	outer Ø	Bending Radius	Weight	Production Lengths	Order No.
(in / mm)	(mm)	(mm)	(kg/m)	(m)	
2 / 50-51	59.00	185.00	1.20	10	377-0050-0000
2,36 / 60	68.00	330.00	2.72	10	377-0060-0000
2,5 / 63-65	73.00	348.00	2.94	10	377-0065-0000
- / 70	78.00	375.00	3.16	10	377-0070-0000
3 / 75-76	83.00	403.00	3.38	10	377-0075-0000
- / 80	88.00	420.00	3.60	10	377-0080-0000
3,5 / 89-90	100.00	425.00	3.95	10	377-0090-0000
4 / 100-102	110.00	440.00	4.38	10	377-0100-0000
- / 110	120.00	485.00	4.81	10	377-0110-0000
4,72 / 120	130.00	520.00	5.24	10	377-0120-0000
5 / 125-127	135.00	538.00	5.45	10	377-0125-0000
- / 130	141.00	795.00	7.37	10	377-0130-0000
5,5 / 140	151.00	850.00	7.92	10	377-0140-0000
6 / 150-152	162.00	905.00	8.47	10	377-0150-0000
6,3 / 160	172.00	960.00	9.03	10	377-0160-0000
- / 175	186.00	1043.00	9.86	10	377-0175-0000
7 / 178-180	191.00	1070.00	10.10	10	377-0180-0000
8 / 200-203	216.00	1210.00	15.10	5	377-0200-0000
- / 225	241.00	1348.00	17.00	5	377-0225-0000
- / 250	266.00	1495.00	18.80	5	377-0250-0000
- / 300	316.00	1770.00	22.50	5	377-0300-0000

Overpressure and underpressure are recommended threshold operating values, products can be subjected to higher loads upon request. The bending radius is measured through the inside of the hose arch. The right to make technical modifications is reserved. All values determined at 20°C and are approx. data. Additional information at www.norres.com/en/technology/

Overpressure and underpressure are recommended threshold operating values, products can be subjected to higher loads upon request. The bending radius is measured through the inside of the hose arch. The right to make technical modifications is reserved. All values determined at 20°C and are approx. data. Additional information at www.norres.com/en/technology/

METAL HOSE 377 REINFORCED



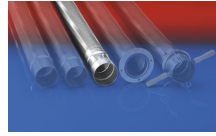
Accessories



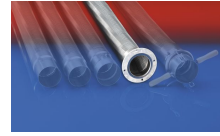
CONNECT 206



CONNECT 203-204



CONNECT 202



CONNECT 205

Overpressure and underpressure are recommended threshold operating values, products can be subjected to higher loads upon request. The bending radius is measured through the inside of the hose arch. The right to make technical modifications is reserved. All values determined at 20°C and are approx. data. Additional information at www.norres.com/en/technology/