

TPE hose, light, fabric reinforced (up to +125°C)

### Application

- flexible hose/ ducting for hot and cold gases
- granulate/ plastic dryer, hot air dryer
- film blowing machine, cooling air at the extrusion tool
- air supply: UV dryer, IR dryer
- textile industry, steam soaking: steam iron, industrial ironing machine, smoothing iron
- bus, utility vehicle, caravan/ trailer, mobile home/ camper/ RV, boat, ship/ vessel/ marine, yacht: ventilation, heating
- paper mill, paper and pulp industry: waste water, air extraction
- heating system/ heater: fresh air supply

- fabric reinforced
- light weight
- highly flexible + compressible
- very good heat resistance
- conforms to RoHS guideline
- good resistance to oil, gasoline and chemicals
- good resistance to alkalis and acids
- REACH according to --> Technology / Technical Information / REACH

### Temperature Range

- 40°C to 110°C
- short time to 125°C

- PROTAPE® tape hose
- spring steel wire integrated in wall
- fabric-reinforced tape
- wall: EPDM/ PP coated fabric
- wall thickness 0,4 mm approx.

### Delivery variants

- further diameters and lengths available on request
- black (standard)
- special colours: full coloured
- customer-specific branding

### Properties

- fabric reinforced

I.D.	outer Ø	Pressure	Vacuum	Bending Radius	Weight	Dimensions in Stock	Order No.
(in / mm)	(mm)	(bar)	(bar)	(mm)	(kg/m)	(m)	
2 / 50-51	55.00	0,265	0,216	33.00	0.21	7,5 15	321-0050-0000
3 / 75-76	80.00	0,180	0,117	49.00	0.31	7,5 15	321-0075-0000
4 / 100-102	108.00	0,130	0,072	65.00	0.62	7,5 15	321-0100-0000
5 / 125-127	133.00	0,110	0,050	81.00	0.78	7,5 15	321-0125-0000
6 / 150-152	158.00	0,090	0,050	98.00	0.93	7,5 15	321-0150-0000
8 / 200-203	208.00	0,065	0,033	120.00	1.24	7,5 15	321-0200-0000
- / 250	259.00	0,055	0,015	150.00	1.75	7,5 15	321-0250-0000
- / 300	309.00	0,045	0,011	180.00	2.10	7,5 15	321-0300-0000

Overpressure and underpressure are recommended threshold operating values, products can be subjected to higher loads upon request. The bending radius is measured through the inside of the hose arch. The right to make technical modifications is reserved. All values determined at 20°C and are approx. data. Additional information at [www.norres.com/en/technology/](http://www.norres.com/en/technology/)

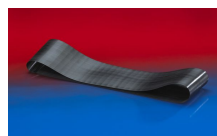
## Accessories



CONNECT 270-271



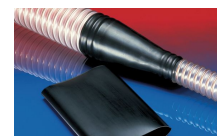
CLAMP 213



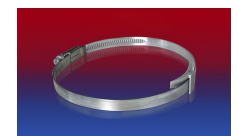
CONNECT 228



CLAMP 217



CONNECT 223



CLAMP 210 BRIDGE CLAMP

Overpressure and underpressure are recommended threshold operating values, products can be subjected to higher loads upon request. The bending radius is measured through the inside of the hose arch. The right to make technical modifications is reserved. All values determined at 20°C and are approx. data. Additional information at [www.norres.com/en/technology/](http://www.norres.com/en/technology/)



CLAMP 212