

Suction hose and pressure hose according to UL94-V2, DIN 4102-B1, light

Application

- flexible hose/ ducting for gases and for abrasive dust, powder, fibres
- rail vehicle, train, railway, tram, boat, ship/ vessel, yacht: ventilation, heating, roof drainage, sand conveying in rail vehicle braking systems, sanitary installation

Properties

- light weight
- highly flexible + compressible 3:1
- abrasion-resistant
- microbe and hydrolysis resistant
- good resistance to oil, gasoline and chemicals

- flame-retardant according to: UL94-V0, DIN 4102-B1, FMVSS 302
- conforms to RoHS guideline
- REACH according to --> Technology / Technical Information / REACH

Temperature Range

- 40° C to 90° C
- short time to 125° C

Design

- PROTAPE® tape hose
- spring steel wire integrated in wall

- extruded tape

- wall: special premium polyurethane with flame retardant additive (Pre-PUR®)
- wall thickness 0,6 mm approx.

Delivery variants

- further diameters and lengths available on request
- transparent (standard)
- special colours: partially coloured, completely coloured
- customer-specific branding

I.D.	outer Ø	Pressure	Vacuum	Bending Radius	Weight	Production Lengths	Order No.
(in / mm)	(mm)	(bar)	(bar)	(mm)	(kg/m)	(m)	
- / 40	47.00	1,015	0,300	47.00	0.26	10 15	332-0040-0000
2 / 50-51	58.00	0,815	0,260	58.00	0.36	10 15	332-0050-0000
2,36 / 60	68.00	0,680	0,210	68.00	0.43	10 15	332-0060-0000
2,5 / 63-65	73.00	0,630	0,180	73.00	0.47	10 15	332-0065-0000
- / 70	78.00	0,585	0,150	78.00	0.50	10 15	332-0070-0000
3 / 75-76	83.00	0,545	0,140	83.00	0.53	10 15	332-0075-0000
- / 80	88.00	0,510	0,130	88.00	0.57	10 15	332-0080-0000
4 / 100-102	108.00	0,410	0,090	108.00	0.66	10 15	332-0100-0000
- / 110	118.00	0,375	0,080	118.00	0.73	10 15	332-0110-0000
4,72 / 120	128.00	0,340	0,075	128.00	0.79	10 15	332-0120-0000
5 / 125-127	133.00	0,330	0,060	133.00	0.82	10 15	332-0125-0000
5,5 / 140	148.00	0,295	0,060	148.00	0.92	10 15	332-0140-0000
6 / 150-152	158.00	0,275	0,060	158.00	0.98	10 15	332-0150-0000
6,3 / 160	168.00	0,255	0,050	168.00	1.04	10 15	332-0160-0000
- / 170	178.00	0,240	0,045	178.00	1.11	10 15	332-0170-0000
7 / 178-180	188.00	0,230	0,040	188.00	1.17	10 15	332-0180-0000
8 / 200-203	208.00	0,205	0,040	208.00	1.54	10 15	332-0200-0000
- / 225	233.00	0,180	0,030	233.00	1.75	10 15	332-0225-0000
- / 250	258.00	0,165	0,015	258.00	1.90	10 15	332-0250-0000
- / 275	283.00	0,150	0,015	283.00	2.11	10	332-0275-0000
11 / 280	288.00	0,145	0,015	288.00	2.15	10	332-0280-0000
- / 300	309.00	0,135	0,015	309.00	2.53	10	332-0300-0000
- / 315	324.00	0,130	0,010	324.00	2.65	10	332-0315-0000
- / 325	334.00	0,125	0,010	334.00	2.74	10	332-0325-0000
- / 350	359.00	0,115	0,010	359.00	2.95	10	332-0350-0000
- / 400	409.00	0,105	0,010	409.00	3.36	10	332-0400-0000

Overpressure and underpressure are recommended threshold operating values, products can be subjected to higher loads upon request. The bending radius is measured through the inside of the hose arch. The right to make technical modifications is reserved. All values determined at 20° C and are approx. data. Additional information at www.norres.com/en/technology/

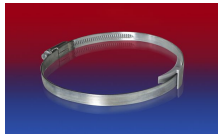
I.D.	outer Ø	Pressure	Vacuum	Bending Radius	Weight	Production Lengths	Order No.
(in / mm)	(mm)	(bar)	(bar)	(mm)	(kg/m)	(m)	
- / 450	459.00	0,090	0,005	459.00	3.77	10	332-0450-0000
- / 500	510.00	0,080	0,005	510.00	5.16	10	332-0500-0000

Overpressure and underpressure are recommended threshold operating values, products can be subjected to higher loads upon request. The bending radius is measured through the inside of the hose arch. The right to make technical modifications is reserved. All values determined at 20 °C and are approx. data. Additional information at www.norres.com/en/technology/

Accessories



CLAMP 212



CLAMP 210 BRIDGE CLAMP



CLAMP 217



CLAMP 213



CONNECT 270-271



CONNECT 223

Overpressure and underpressure are recommended threshold operating values, products can be subjected to higher loads upon request. The bending radius is measured through the inside of the hose arch. The right to make technical modifications is reserved. All values determined at 20 °C and are approx. data. Additional information at www.norres.com/en/technology/