

Pasta Processing Plant

Screw Feeders CX

3



Description ▼

CX trough-type Screw Conveyors and Feeders are suitable for all those applications where perfect cleanliness, contamination-free operation, weather and corrosion-resistance play an essential role. They are widely used in pasta processing plants.

Function ▼

CX Screws are usually installed as feeders under hoppers, silos or bin activators, as well as other devices. They are also used as conveyors for handling all the raw materials in pasta processing.



Application ▼

The application in the photograph shows an inclined CX Screw Feeder for material transfer (spinach flour, tomato flour, semolina, micro-toxin-free wheat).

Benefits ▼

- ✓ No material residue thanks to perfectly smooth trough surface;
- ✓ Trough end flanges welded on high precision jigs;
- ✓ Trough-bolted end plates complete with laser-cut drillings to accommodate end bearing assemblies;
- ✓ Screws made up of modular helicoids flighting with constant or variable pitch continuously welded on both sides on high quality centre pipe;
- ✓ Screw sections connected through bolted or splined shaft couplings;
- ✓ Screws electronically balanced.

Pasta Processing Plant

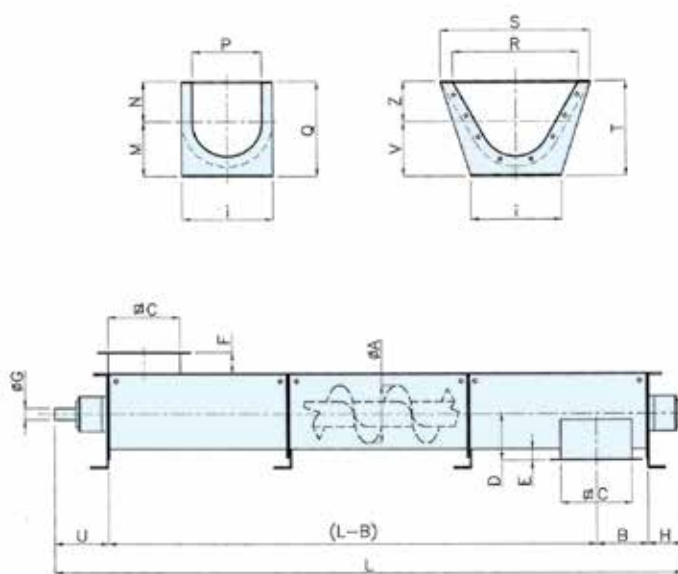
Screw Feeders CX



Technical Features / Performance ▼

- ▶ 304 L / 316 L stainless steel
- ▶ Modular trough and screw sections
- ▶ Square or cylindrical WAM® standard inlet and outlet spouts welded on the trough orthogonally as to the conveyor axis
- ▶ Bolted modular trough cover complete with strip gasket
- ▶ End bearing assemblies with shaft, roller bearings and externally adjustable packing glands
- ▶ Intermediate hanger bearings complete with shaft and self-lubricating long-life slide bushes

Overall Dimensions ▼



Ø A	100	120	150	200	250	300	350	400	500	600
B	170	170	170	195	220	260	290	340	390	440
C	175	175	175	225	275	325	375	425	525	625
D	130	130	130	165	195	225	225	285	340	395
E	40	40	40	50	55	60	65	70	75	80
F	60	60	60	60	60	60	60	80	80	80
Ø G	25	25	35	35	35	35-45	35-45	45	55-65	55-65-80
H	115	115	125	125	125	125-145	145	145-155	155-165	155-165-180
I	265	265	265	315	365	435	485	540	655	755
L	Rounded up to 0.5 m									
M			145	185	215	245	275	305	380	465
N			115	135	160	195	235	270	340	420
P			175	225	275	325	375	425	525	625
Q			260	320	375	440	510	575	720	885
R	175	175	375	425	525	525	625	730	830	1040
S	265	265	485	540	655	655	755	900	1000	1250
T	260	260	320	385	440	495	545	595	720	885
U	160	160	185	185	185	185-230	230	230-240	240-270	240-270-310
V	145	145	145	185	215	245	275	305	380	465
Z	115	115	175	200	225	250	270	290	340	420

Dimensions in mm

This datasheet might not show the complete range but only the models specialised for the application.